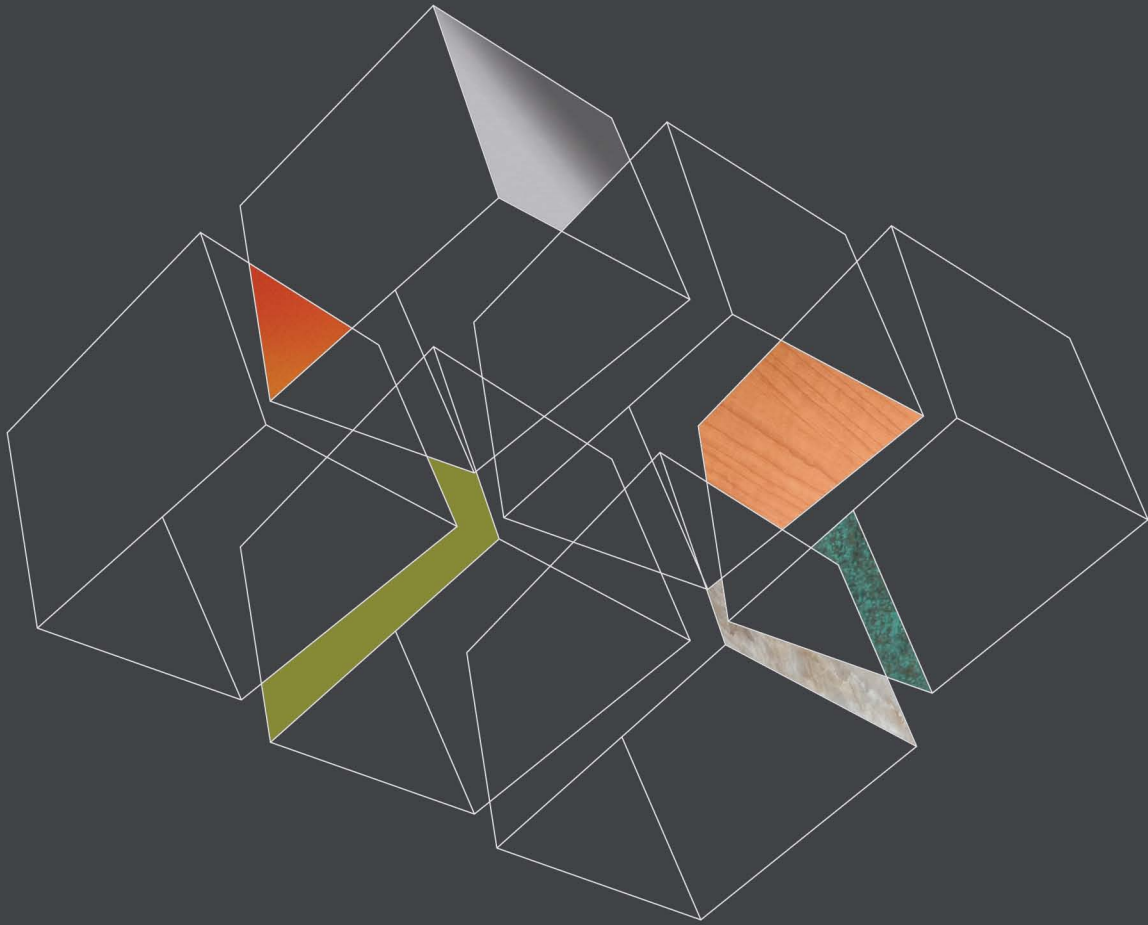


colors and finishes



ALPOLIC® & ALPOLIC®/fr  
MATERIALS

 MITSUBISHI PLASTICS COMPOSITES AMERICA, INC.  
[www.alpolic-northamerica.com](http://www.alpolic-northamerica.com)



EXPAND YOUR CREATIVE HORIZONS WITH THE RICHNESS AND VIBRANCY OF ALPOLIC®. OUR EXTENSIVE SELECTION OF SURFACE TREATMENTS AND PAINTED COIL OR NATURAL METALS ENABLE YOU TO CREATE DESIGNS AND EFFECTS THAT NO OTHER PANEL SYSTEM CAN ACHIEVE. WHETHER YOU'RE LOOKING FOR TRADITIONAL MUTED COLORS, NEWER, BRIGHTER AND CLEANER COLORS, COOL COLORS, FAUX FINISHES, METALLIC, MICA, PRISMATIC, OR NATURAL METAL SURFACES, ALPOLIC®, WITH OUR COMBINATION OF UNIQUE COATING AND PAINT TECHNOLOGY, CAN CREATE THE LOOK YOU WANT.

## ARCHITECTURAL STOCK FINISHES AND COLORS

**STOCK** painted colors are produced in 2-coat or 3-coat finishes, and are stocked in two widths: 50 and 62 inches and two lengths: 146 and 196 inches. These 4mm thick panels, available in PE and FR core, are manufactured to architectural standards with fluoropolymer paint in 7 solid colors, 5 metallics, and 4 micas. Distinctive classics of the industry, they are stocked for immediate shipment.

**ANODIZED** panels are stocked in a clear anodized Class 1 finish. We stock both 50 and 62-inch panels, manufactured

with 1100 alloy aluminum. This is the purest aluminum made unique to the North American market. There are 5 additional custom anodized finishes also available.

**NATURAL METALS** offer a traditional look in a truly state of the art panel system. They feature the same flatness and workability of aluminum composite but with the metal surface of your choice. Each 4mm metal panel is stocked and available for immediate shipment.

## PROGRAM COLORS

**PROGRAM** colors from ALPOLIC® manufactured with fluoropolymer paint systems deliver design and performance advantages inconceivable before now. Only ALPOLIC®'s FEVE paint system with Lumiflon®, a remarkable second-generation fluoropolymer coating, can produce vivid, bright colors in a wide range of glosses. In fact, ALPOLIC®'s color specialists have matched and produced thousands of different colors and all available in a 30 to 70 gloss range. This astounding range is possible only with FEVE technology. Pick a color from the chart or let us build you a color as unique as your project. Finishes are in both 2 and 3-coat systems, and panels are stocked in either 3mm or 4mm thickness. We control all our coating internally to ensure your color is correct and meets your expectations. Contact customer service for product availability.

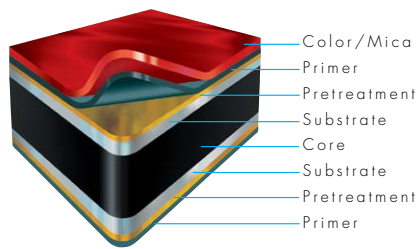
**STONE/TIMBER SERIES** is produced by combining a proprietary image transfer process developed by Mitsubishi Plastics with Lumiflon® resin technology. The result is a lightweight painted panel with the classic beauty of stone or timber. The durable FEVE protective coatings offer all the protection of a standard fluoropolymer coating. We stock it in 62-inch panels for your immediate needs.

**PRISMATIC** combine fluoropolymer paint technology with specialized pigments to create unique colors and effects. The resulting finishes stand out beautifully, bringing 3-dimensional depth to your 2-dimensional surface. The Prismatic effect makes the surface sparkle like diamonds or actually changes colors with lighting or the movement of the sun. The Lumiflon® (FEVE) paint allows for higher gloss and richer surface finishes. Please consult our Prismatic Brochure to find that unique color to complement your building design.

**MULTI-COLOR** panels were developed by ALPOLIC® over 15 years ago, thanks to an advanced coating process capable of creating these unique applications. Our color stylists can help you develop a color scheme that fulfills your desires, from bright and glossy to muted and subtle. We work with the architect/designer to develop the look needed to convey your message. These high gloss and rich color systems can only be accomplished by combining the FEVE technology with our advanced die coil coating system.

**DECORATIVE** panels from ALPOLIC® use specially treated aluminum surfaces coated with crystal clear FEVE Lumiflon® clear coats to create another technological breakthrough. HPA shines like a mirror. HLZ has the look of brushed stainless steel. The tough clear coats on both panels provide the necessary protection for exterior applications.

## 2 COAT/SOLID/MICA



**CUSTOM COLORS** from ALPOLIC® offer both 2 and 3-coat finishes in a virtually unlimited palette of colors, glosses and finishes made possible through the use of the latest in high-performance fluoropolymer resins, all of which meets or exceeds AAMA 2605. Bright and clean high gloss colors, rich metallics, low gloss earth tones, and Prismatic special effect coatings are all at your command. If you can imagine a color, ALPOLIC® can make it a reality.

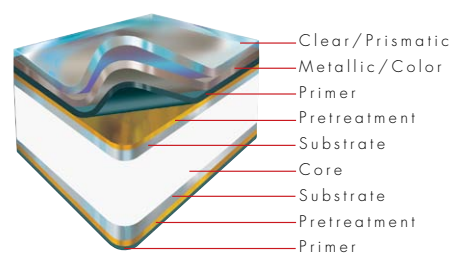
**METALLIC, MICA, AND PRISMATIC** – For the best color consistency in Metallic, Mica and Prismatic paint finishes, consider and maintain directionality during estimation, fabrication, and erection. We recommend ordering these paint finishes for your entire job at one time and from one lot of material. We can provide lot matching when necessary to aid in color consistency.

**SHORT RUN CAPABILITIES** – ALPOLIC®'s coil coating system allows as little as 1,000 square feet to be coated in any color you wish. We can provide these small quantities of custom color with the color consistency of coil coating and the controlled curing that allows extended warranties. We stock coil in 40, 50 and 62-inch widths. The width you need combined with our short run capabilities provide the architect/designer with endless possibilities. Let our expert staff help you with color and selection of materials\*.

**GLOSS RANGE** – It is extremely important to select the proper gloss finish. The same base color in a different gloss can change the eye's perception of the color. When submitting a color for custom matching, take the time to ensure that the gloss you desire is the same as the sample you want our color stylists to match. This will speed the custom color match process and ensure your ultimate satisfaction. Remember, the same exact color with different glosses can be visually different in appearance and effect.

**THE EMERGING STANDARD IN FINISHES** ALPOLIC® uses fluoropolymer resin as the standard for both stock and program color paint finishes. This high performance resin is the most advanced architectural finish available today. FEVE Lumiflon® and PVDF Kynar® delivers superior durability, weatherability, and chemical resistance. Lumiflon® can produce any color in the Kynar®

## 3 COAT/METALLIC/PRISMATIC

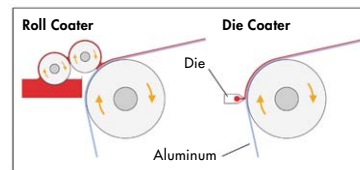


palette in a wider gloss range than Kynar®. Only the Lumiflon® resin system can produce our broader palette of brighter, cleaner, and more exotic colors. The sky is the limit in creating your color in glosses ranging from satin to high luster. FEVE Lumiflon® also has the ability to be recoated with an air-dry system without any special preparation, affording the same flexibility as the coil coated products.

**LIGHT REFLECTANCE VALUE** – The LRV (Light Reflectance Values) noted represent a percentage of the light energy, in the visible spectrum, that is reflected by the surface being measured. This value is defined in ASTM C609 as the Y value as measured in an XYZ/Yxy color space. The values noted on this card are typical values for these colors. Lot to lot variation will slightly affect the LRV values.

**SOLAR REFLECTIVE INDEX** – The Solar Reflective Index (SRI), as defined by ASTM E1980 using 12 W/m²K values incorporates reflectivity, or how well a material reflects back rather than absorbing radiant energy, and emissivity or how well a material radiates heat that was absorbed back into the environment. The Cool Roof Rating Council (CRRC) has established a SRI value of 29 or greater for steep slope roofs as a requirement for a "Cool" rating. Most of our Architectural stock colors achieve this requirement and are noted after the SRI value as cool.

**CONSISTENT COATING QUALITY** – Consistent coating quality is maintained through the continuous application of paints to the aluminum coil in the coil coating line. The "Die Coating" process that occurs on this line employs a unique technology developed by Mitsubishi Plastics that ensures a smooth, fine coating.



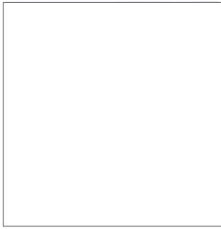
**Fig. 1 Roll Coater vs. Die Coater**  
Roll Coaters are widely used in the coil coating industry and produce an adequate quality with reasonable efficiency. However, Die Coaters surpass Roll Coaters, permitting direct coating on aluminum surface that ensure smoother and finer finishes without roping marks.

\*For additional information on stock availability, sizing and distribution, please contact your local ALPOLIC® sales office.

# ARCHITECTURAL STANDARD STOCK COLORS

30 Year Finish Warranty

## SOLID



**Bone White**  
4-BNT-30  
LRV 78.50/SRI 82-Cool



**Oyster**  
4-CRT-30  
LRV 72.46/SRI 82-Cool



**Mist White**  
4-MST-30  
LRV 69.96/SRI 75-Cool



**Aluminum Grey**  
4-AGT-30  
LRV 31.60/SRI 26



**BGY Grey**  
4-BGY-50  
LRV 10.41/SRI 7



**Bronze**  
4-JBR-30  
LRV 3.34/SRI 2

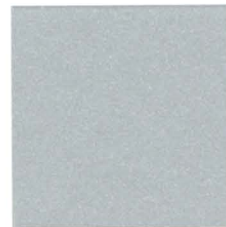


**TOB Black**  
4-TOB-15  
LRV 1.01/SRI 0

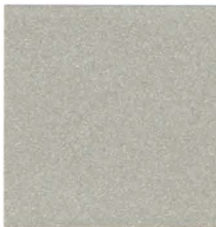
## MICA



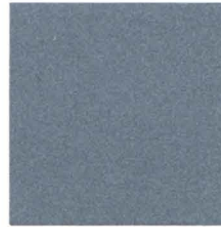
**Mica Platinum**  
4-OPT-50  
LRV 30.88/SRI 53-Cool



**Mica Anodic Clear**  
4-MNC-30  
LRV 34.43/SRI 56-Cool



**Mica Champagne**  
4-MCU-30  
LRV 22.61/SRI 38-Cool



**Mica Grey**  
4-MZG-50  
LRV 7.95/SRI 14

## METALLIC



**BSX Silver Metallic**  
4-BSX-30  
LRV 30.94/SRI 71-Cool



**Silver Metallic**  
4-SMX-30  
LRV 36.59/SRI 63-Cool



**Champagne Metallic**  
4-CMX-30  
LRV 31.19/SRI 59-Cool



**Medium Bronze Metallic**  
4-MBX-30  
LRV 31.20/SRI 40-Cool



**Dark Copper Metallic**  
4-DCX-30  
LRV 15.09/SRI 47-Cool

# ARCHITECTURAL PREMIUM STOCK FINISHES

Call for Warranty Details

## NATURAL METALS



**Titanium**  
4-OTI  
LRV 18.68/SRI 23



**Stainless**  
4-4HL  
LRV 21.84/SRI 34-Cool

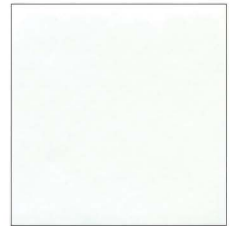


**Zinc**  
4-AZZ  
LRV 21.51/SRI 0



**Copper**  
4-C12  
LRV 5.03/SRI 55-Cool

## ANODIZED



**Clear**  
4-CLR  
LRV 34.31/SRI 84-Cool

\*Colors shown are as close to actual colors as allowed by the printing process. Due to product improvements, changes and other factors Mitsubishi Plastics Composites America, Inc. reserves the right to change or delete information herein without prior notice. Please refer to warranty details for exclusions and limitations. Additional warranty coverage over that stated may be given to some projects/products. Please consult Customer Service.